



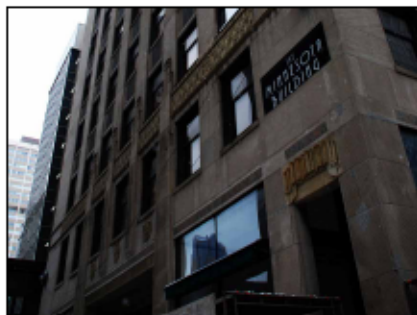
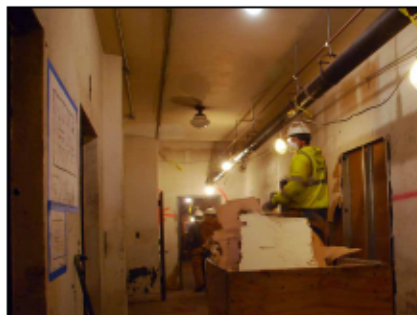
2011

*Environmental*  
**EXCELLENCE**  
AWARD

**LCS**

**Lloyd's Construction Services, Inc.**  
*Savage, MN*

## The Minnesota Building



Partnering with the St. Paul Housing & Redevelopment Authority, Lloyd's Construction Services 'deconstructed' this 82-year old, 101,000 s.f. building in the heart of St. Paul. Lloyd's removed the entire interior of the 13-story structure for development into 137 housing units and 10,000 s.f. of commercial space. Environmentally sensitive planning allowed for a significant diversion of waste from the landfill, greater recycling, over 225 tons of metal, and preservation of this aged yet remarkable icon in Minnesota's capital.

*Environmental Stewardship*



**NATIONAL  
DEMOLITION  
ASSOCIATION**  
*Making Way*